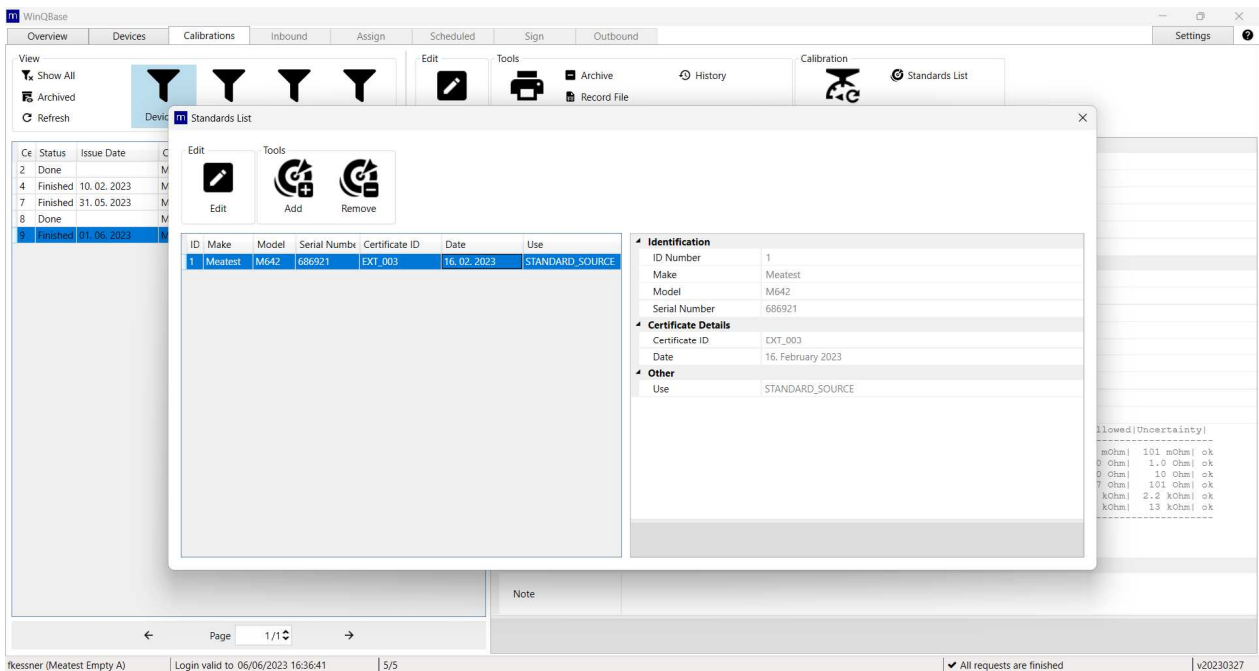


# WinQBase - Database Backup and Export

application note AN109

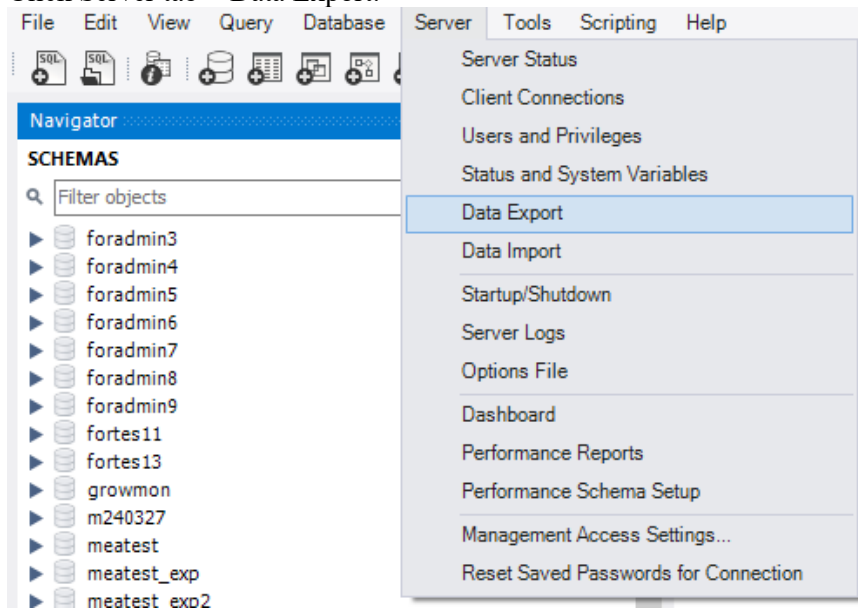


## 1. Database Export

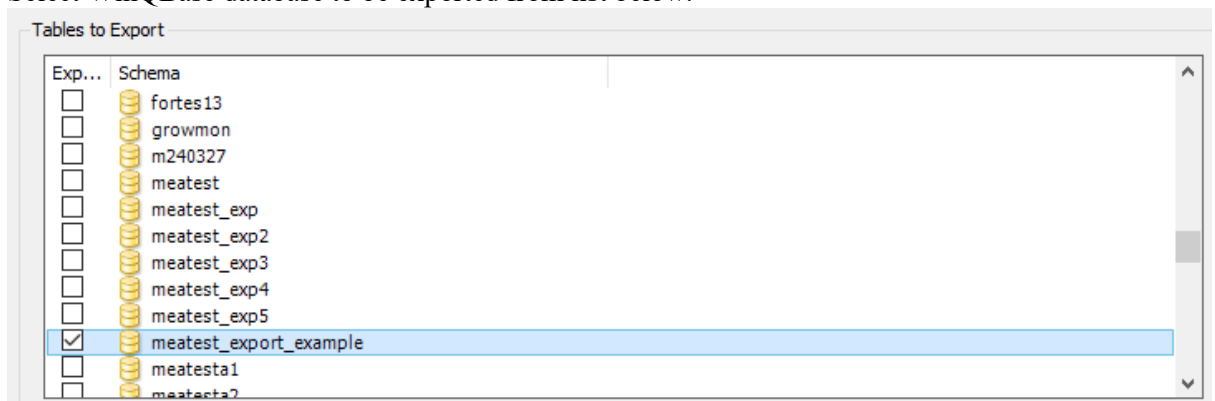
This chapter describes MySQL database export process using MySQL Workbench. Exported database, called SQL dump, can be used for backup purposes or be sent to Meatest for troubleshooting.

If you're about to send a database to Meatest, make sure to exclude all custom made tables, events and triggers from the database export as items created manually outside the WinQBase environment may cause import and runtime errors in Meatest.

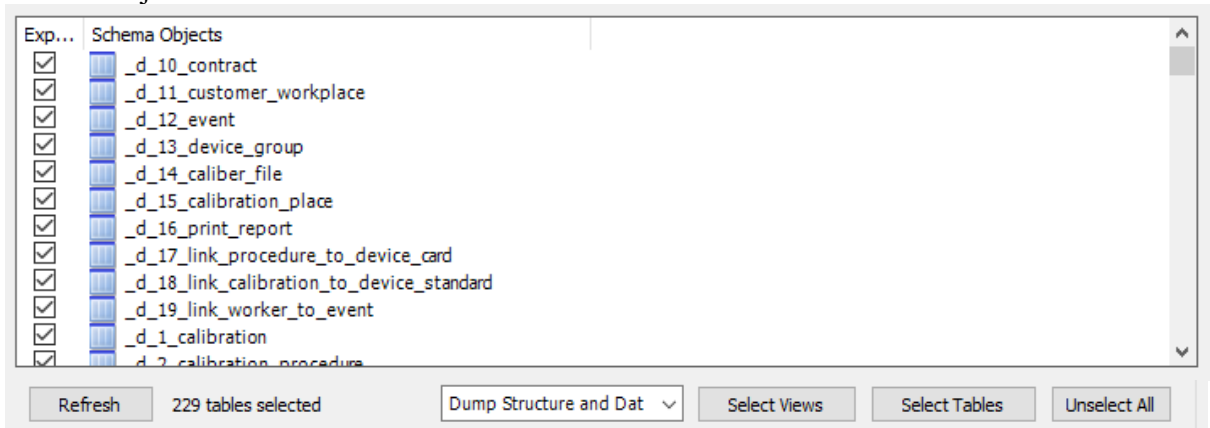
1. Run MySQL Workbench and connect to your MySQL server with your SQL database credentials.
2. Click Server tab > Data Export.



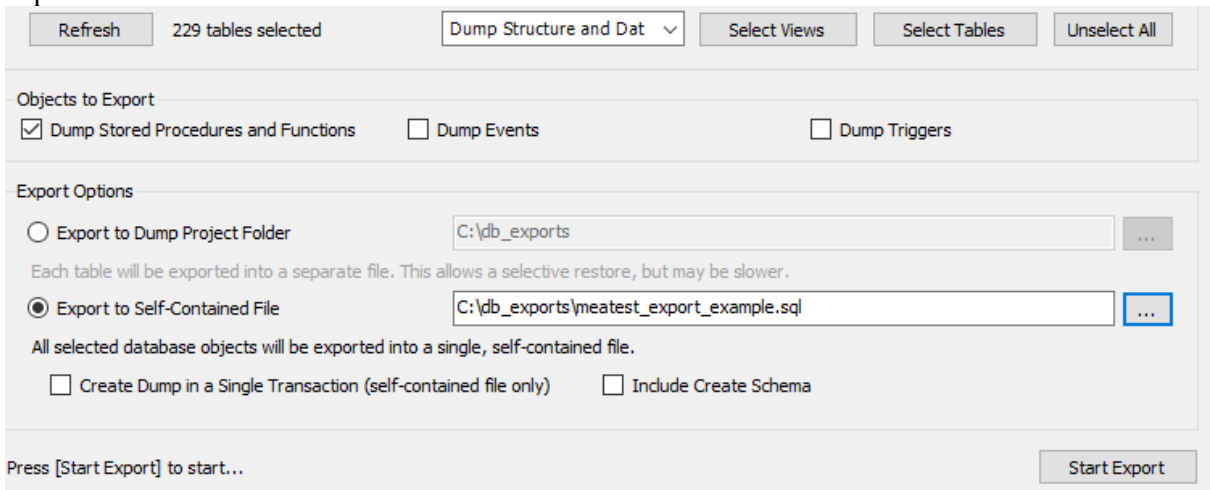
3. Select WinQBase database to be exported from list below.



- Make sure “Dump Structure and Database” is selected. When sending SQL dump to Meatest, exclude all custom tables created outside the WinQBase environment by unchecking them in Schema Objects list.



- Check “dump Stored Procedures and Functions”, “Export to Self-Contained File” and choose export destination.



- Click Start Export, wait for the process to finish and exit MySQL Workbench.

